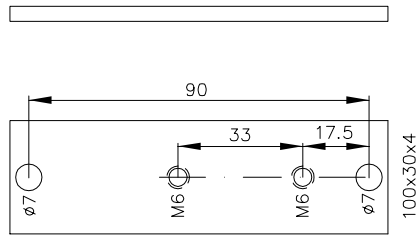


Adapter for G19 Type AD19SS1



Scale: 1:2

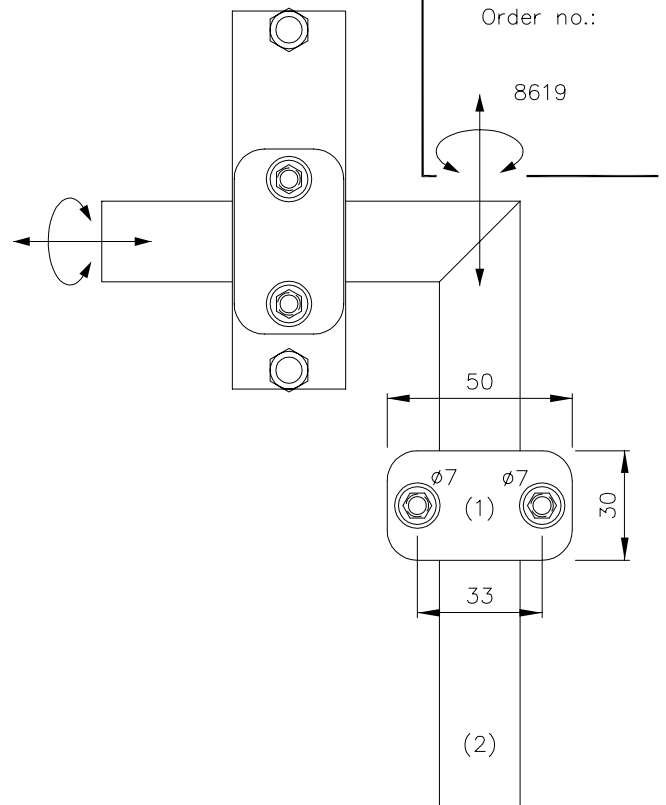
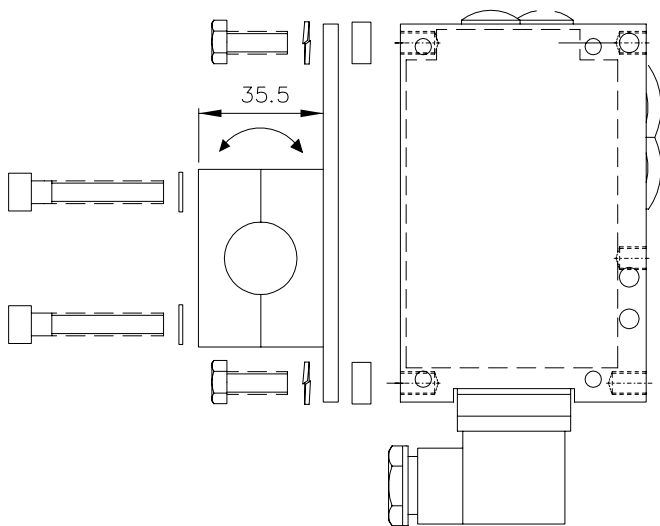
Z

Adapter

AD19SS1

Order no.:

8619



M: 1:2

Parts List:

- Half clamp terminal "Stauff" size III/21.3 (1) and Elbow tube $\varnothing 21.3 \times 110 \times 155$ mm (2), with
- 2 Screws M6x35 Inbus (with hexagon socket head cap),
- 2 plain washer 10.5x6.5x1, 2 Hexagon head screws M6x16
- 2 Stay tubes 11x6.5x5 brass, 2 Lock washer $\varnothing 6.5$