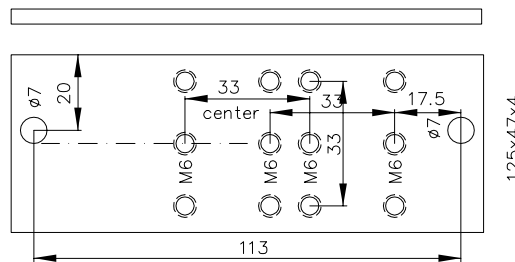


## Adapter for R26 Type AD26SS1



Scale: 1:2

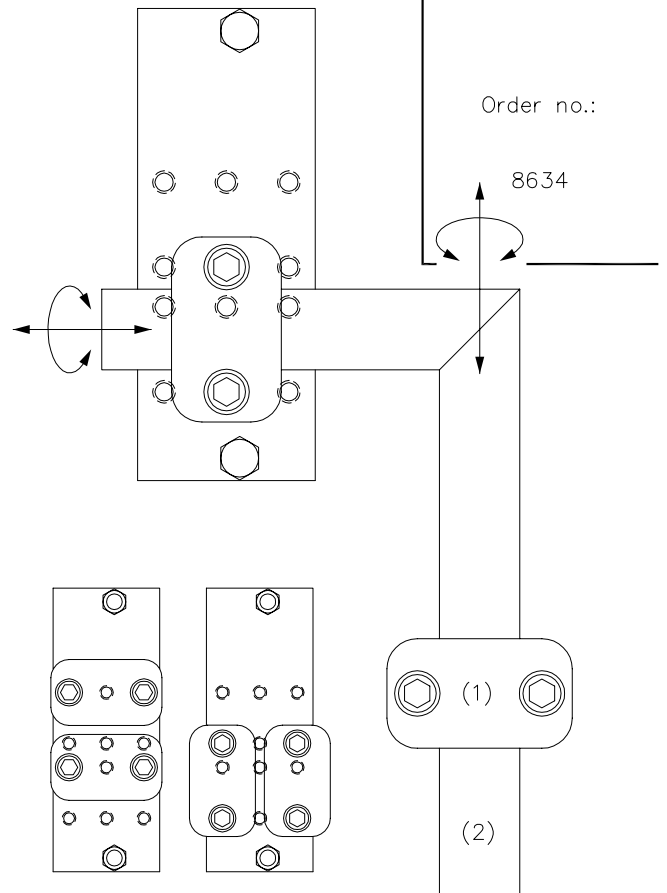
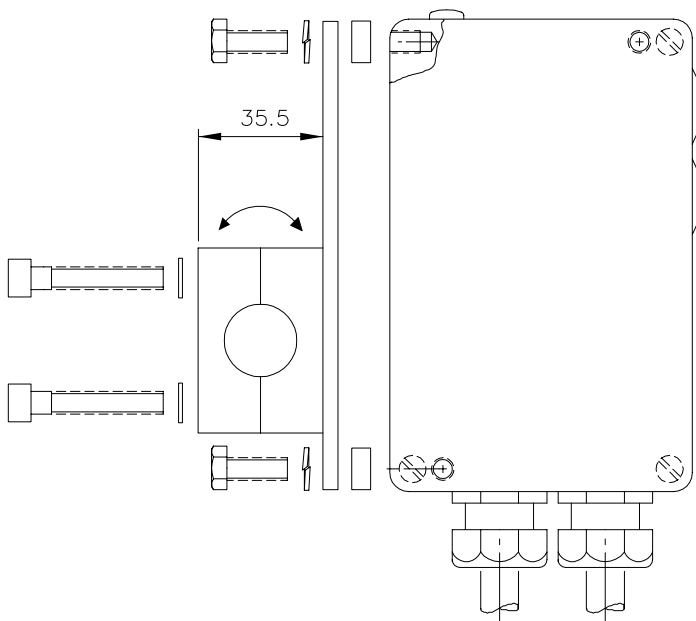
Z

Adapter

AD26SS1

Order no.:

8634



Scale 1:3.3

Scale 1:2

### Parts List:

- Half clamp terminal "Stauff" size III/21.3 (1) and Elbow tube 1/2  $\varnothing$ 21.3x110x155mm (2), with
- 2 Screws M6x35 Inbus (with hexagon socket head cap),
- 2 plain washer 10.5x6.5x1, 2 Hexagon head screws M6x16
- 2 Stay tubes 11x6.5x5 brass, 2 Lock washer  $\varnothing$  6.5

8634 DE  
E 8634 1  
21.02.05 mj