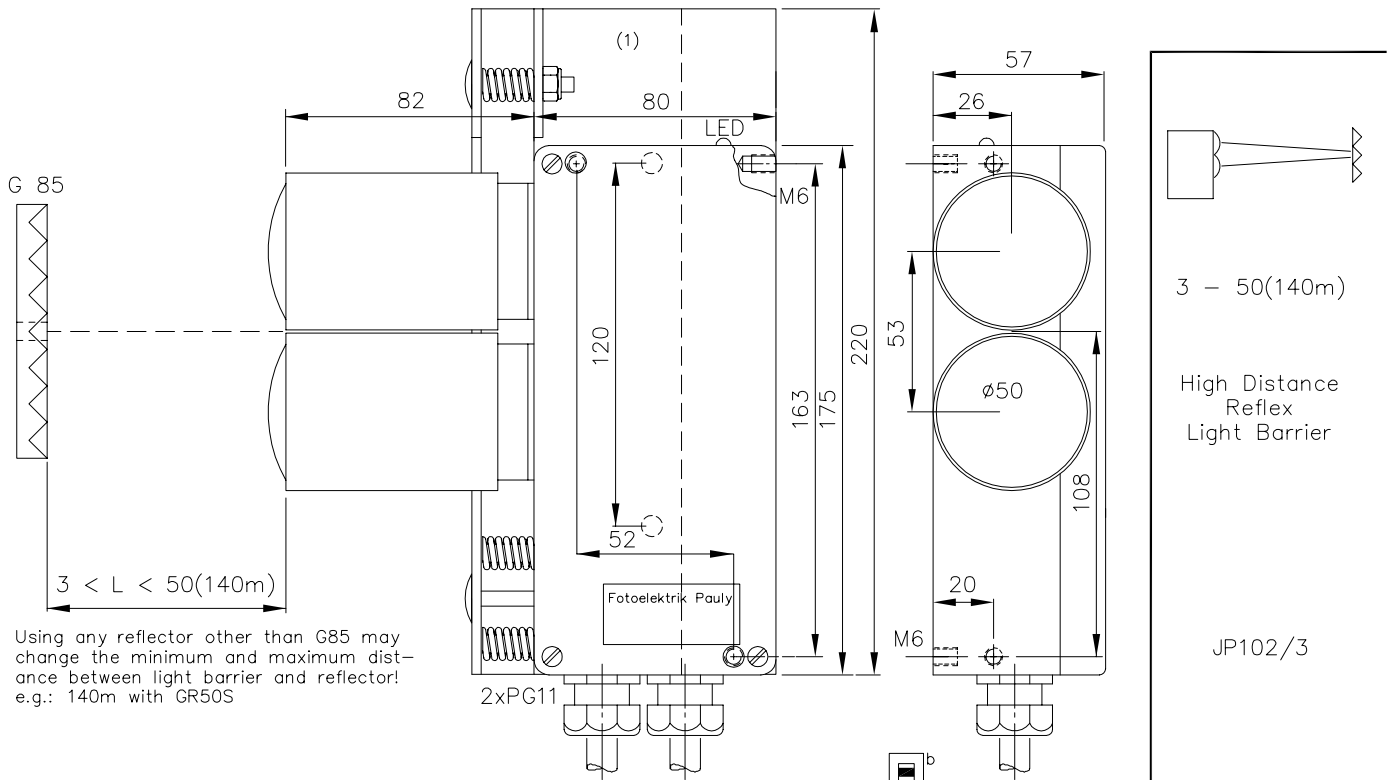
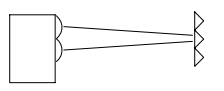


## High Distance Reflex Light Barrier Type JP102/3

3 - 50(140m)

High Distance  
Reflex  
Light Barrier

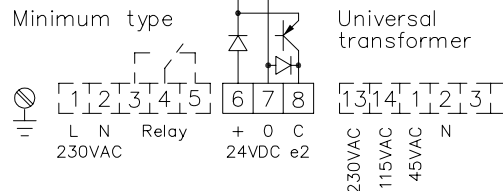
JP102/3

Order no.:  
1103

### Technical characteristics of minimum type:

Housing	Al-Cast
Weight	approx. 1500g
Protection mode	IP65
Connection	Terminal strip
Supply	24VDC/50mA without load
Output	pnp 60mA s.c.-prot., e2
Signal mode	bright-/darkswitching, selectable
Transmitter light	GaAs 880nm, invisible
Steady light resistance	>80kLx
Interference suppress.	Force synchronization
Light beam diameter	approx. 200mm/50m
Access time	<12ms/Switch transition
Switching rate	electron.: 40/s; Relay: 10/s;
Switch indicator	LED
Ambient temperatur	-25...+60°C

### Connection diagram:



### Features:

Connection	3+1 pin Plug stH4 4+1 pin Plug stA5 6+1 pin Plug stA7 5+1 wire No.-Cable K6 2x3 wire No.-Cable 2K3
Supply	24-80VDC 230V, 110-130V, 42-48V, 24VAC or 230/115/45VAC with universal transformer
Output	Relay 250VAC/10A, 2500VA 1xCh npn 60mA s.-c.-prot., e3 Optocoupler 60V/50mA, e1 if req. 2xe2 or 2xe3 or antival. e4 or e5
Access time	"q": <2ms/Switch transition
Switching rate	"q": 300/s, Relay: 10/s
Time delay	0-10s, switching-on-off-delay, separately adjustable, z10
Level indicator	DIANA, i
Heat-protected transductor system, pl	If using cooling water flange, then milled wall, y
JV102/3	: Pollution warning output
JU102/3	: 'intelligent' Pollution warning output

### Accessories:

- Diaphragms
- Reflector
- Heavy adjustment flange R27SH (1)
- Elbow tube adjustment AD27SS1 or AD27SS2
- Cooling water flange KW27

1103 DE  
E\_1103 1  
(23.10.98 tb)  
(13.01.03 gs)  
18.02.05 m]