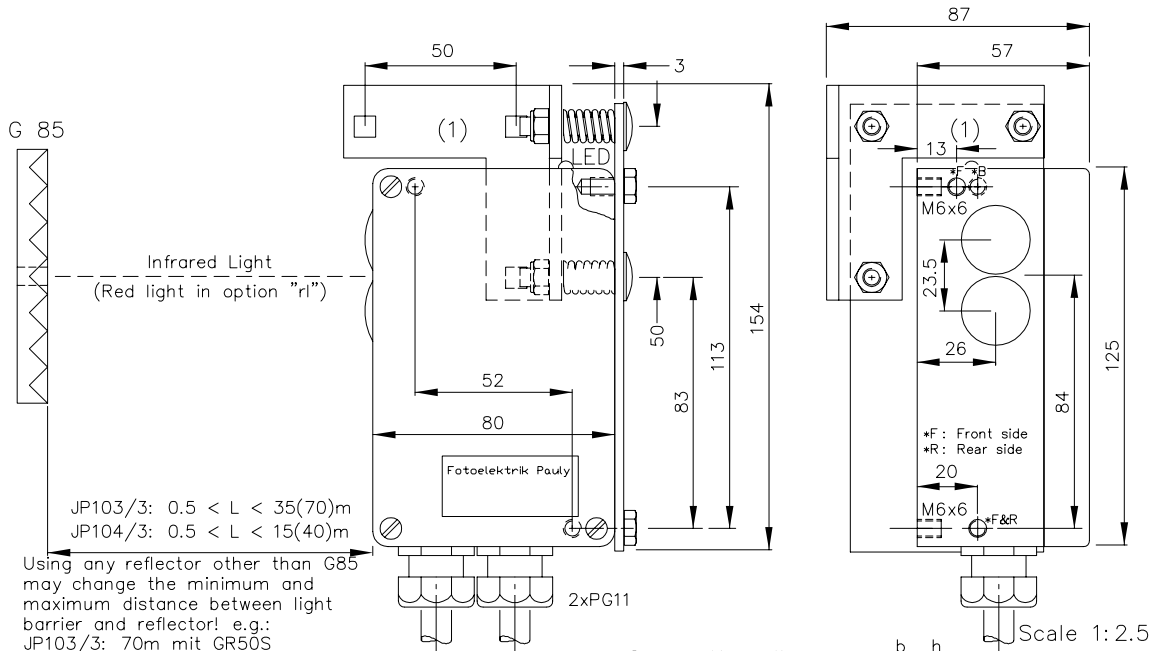


## (Infra-)Red-Light Reflex Light Barrier Types JP104/3 & JP103/3



### Technical characteristics of minimum type:

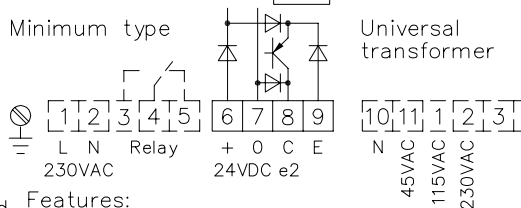
Housing	Al-Cast
Weight	approx. 700g
Protection mode	IP65
Connection	Terminal strip
Supply	24VDC/50mA without load
Output	pnp 60mA s.-c.-prot., e2
Signal mode	bright-/darkswitching, selectable
Transmitter light	GaAs 880nm, invisible
Steady light	JP103/3: >80kLx
resistance	JP104/3: >100kLx
Interference suppress.	Force synchronization
Light beam diameter	approx. 130mm/10m
Access time	<12ms/Switch transition
Switching rate	electron.: 40/s; Relay: 10/s
Switch indicator	LED
Ambient temperatur	-25...+60°C

### Accessories:

- Diaphragms
- Reflectors
- Adjustment flange JF26H (1)
- Heavy adjustment flange R26SH
- Elbow tube adjustment AD26SS1 or AD26SS2
- Cooling water flange KW26
- Anti dust tube TUB75 with adaptor
- Integrated protection system KJT.. or KRT26R\*

\* Including: cooling by water, adjustment, anti dust tube (optional: diaphragms, optical filter)

### Connection diagram:



### Features:

Connection	3+1 pin Plug stH4 4+1 pin Plug stA5 6+1 pin Plug stA7 5+1 wire No.-Cable K6 2x3 wire No.-Cable 2K3
Supply	24-80VDC 230V, 110-130V, 42-48V, 24VAC or 230/115/45VAC with universal transformer
Output	Relay 250VAC/10A, 2500VA, 1xCh., R npn 60mA s.-c.-prot., e3 Optocoupler 60V/50mA, e1 if req. 2xe2 or 2xe3 or antival. e4 or e5
Access time	"q": <2ms/Switch transition
Switching rate	"q": 300/s, Relay: 10/s
Time delay	0-10s, switching-on-off-delay, separately adjustable, z10
Level indicator	DIANA, i
Heat-protected transducer system, pl	
Transmitter light	Red light 650nm, visible light spot, rl
Tranformer must be fitted with increased resistance to shocks and vibrations, tr	
If using cooling water flange, then milled wall, y	
JV103.. or JV104.. :	Pollution warning output
JU103.. or JU104.. :	'intelligent' Pollution warning output

1101 DE (29.01.98 tb) 13.04.05 mj  
E\_1101\_1 (26.10.98 tb)  
(18.07.94 tb) (03.07.02 tb)  
(03.02.95 tb) (18.02.05 mj)