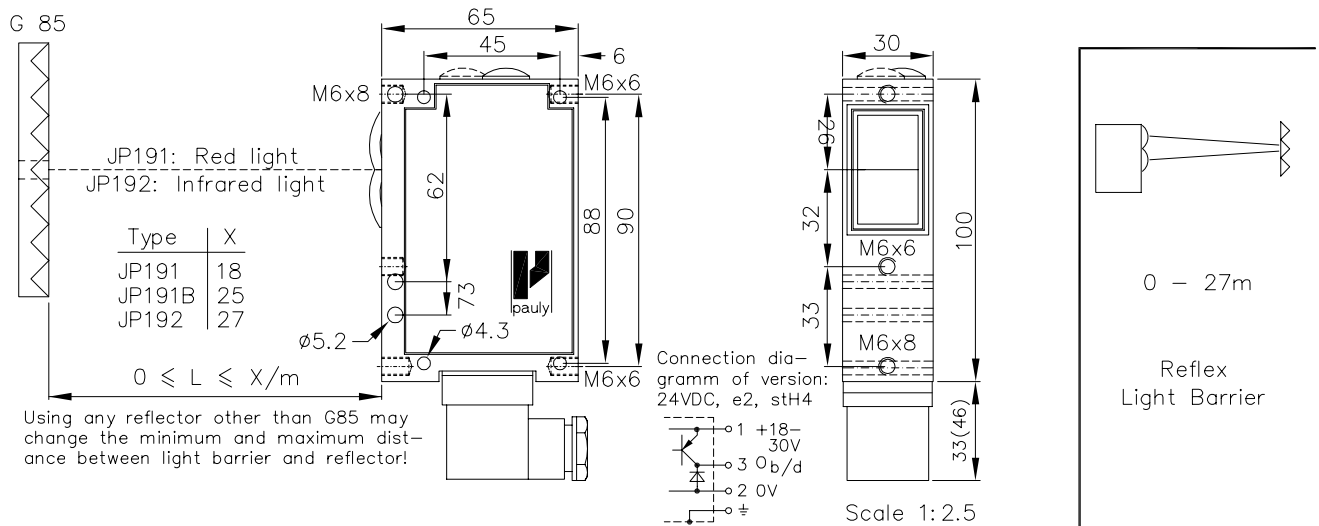


(Infra-)Red-Light Reflex Light Barrier Types JP191(B) & JP192

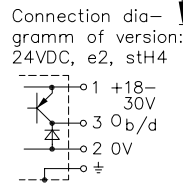


JP191: Red light
JP192: Infrared light

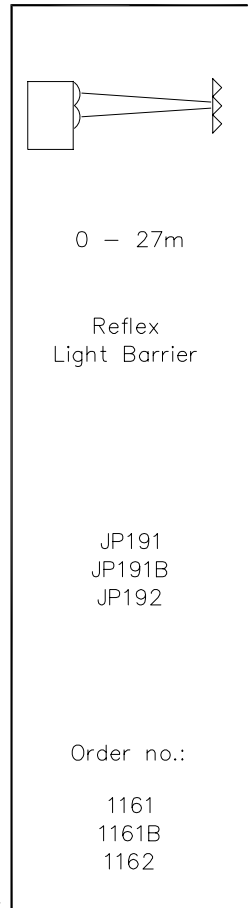
Type	X
JP191	18
JP191B	25
JP192	27

$$0 \leq L \leq X/m$$

Using any reflector other than G85 may change the minimum and maximum distance between light barrier and reflector!



Scale 1:2.5



Technical characteristics of minimum type:

Housing	Al-Cast
Weight	approx. 350g
Protection mode	IP65
Connection	3+1 pin Plug stH4
Supply	24VDC/40mA without load
Output	pnp 60mA s.c.-prot., e2
Signal mode	bright/dark, selectable
Transmitter light	JP191: LED 650nm JP192: LED 880nm
Steady light resistance	>80kLx
Interference suppress.	Force synchronization
Light beam diameter	approx. 85mm/6m
Access time	<12ms/Switch transition
Switching rate	40/s, Relay: 10/s
Switch indicator	LED
Ambient temperatur	-30...+80°C (100°C)*

Features:

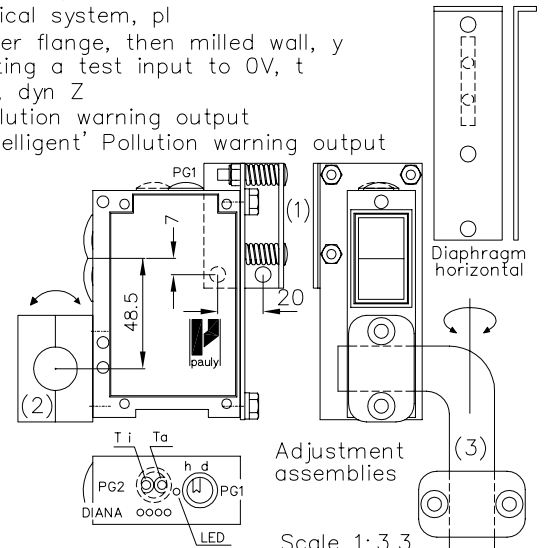
Connection	4 pin Plug stLU4 4+1 pin Plug stA5 6+1 pin Plug stA7 6+1 pin Plug stH7 3+1 wire No.-Cable K4 2x3 wire No.-Cable 2K3
Supply	230V, 115V, 42..48V, 24VAC 24..230VUC
Output	nnp 60mA s.c.-prot., e2 Optocoupler 60V/50mA, e1 Relay 240VAC/5A, 120W/1200VA, 1xC-0-contact also: 2xe2/2xe3 or antival. e4/e5
Access time	"q": <2ms/Switch transition
Switching rate	"q": 300/s, Relay: 10/s
Time delay	0-10s, switching-on-off-delay, separately adjustable, z10

Accessories:

Reflectors	
Diaphragms, Optical filters	
Adjustment flange JF19H(1)	
Elbow tube adjustment JR19(2&3)	
Cooling water flange KW19	
Anti heat shield & anti dust tube (K)JT19	

Level indicator

Heat-protected optical system, pl
If using cooling water flange, then milled wall, y
Testable by connecting a test input to 0V, t
Dynamic time delay, dyn Z
JV19.. (#107.): Pollution warning output
JU19.. (#106.): 'intelligent' Pollution warning output



1161 DE (30.01.98 tb) 13.04.05 mj
E_1161_1 (27.10.98 tb)
(26.09.90 rb) (13.01.03 gs)
(26.02.96 tb) (18.02.05 mj)

Hints:

Selection of bright/dark switching mode is standard. The selection switch can be reached after removing the blanking screw designated 'PG1'. Bright switching means that the output (here the pnp transistor) is operated when the transmitter light is received by the receiver after being reflected by the reflector. The switch indicator LED (green) for the working contact always lights when the output is energised.

The on- (Ti) and off- (Ta) delay are optional. Turning the controls behind 'PG2' clockwise increases delay times. The delay time range is between approx. 0 and 10 secs. Other delays are available on request.

The level indicator 'DIANA' (Digital ANalog indicator) is optional, too. DIANA shows the level approx. 20 to 25 times above the threshold signal. For proper operation of the light barrier it is not necessary to have all DIANA LEDs on!

E_166x 1.TXT