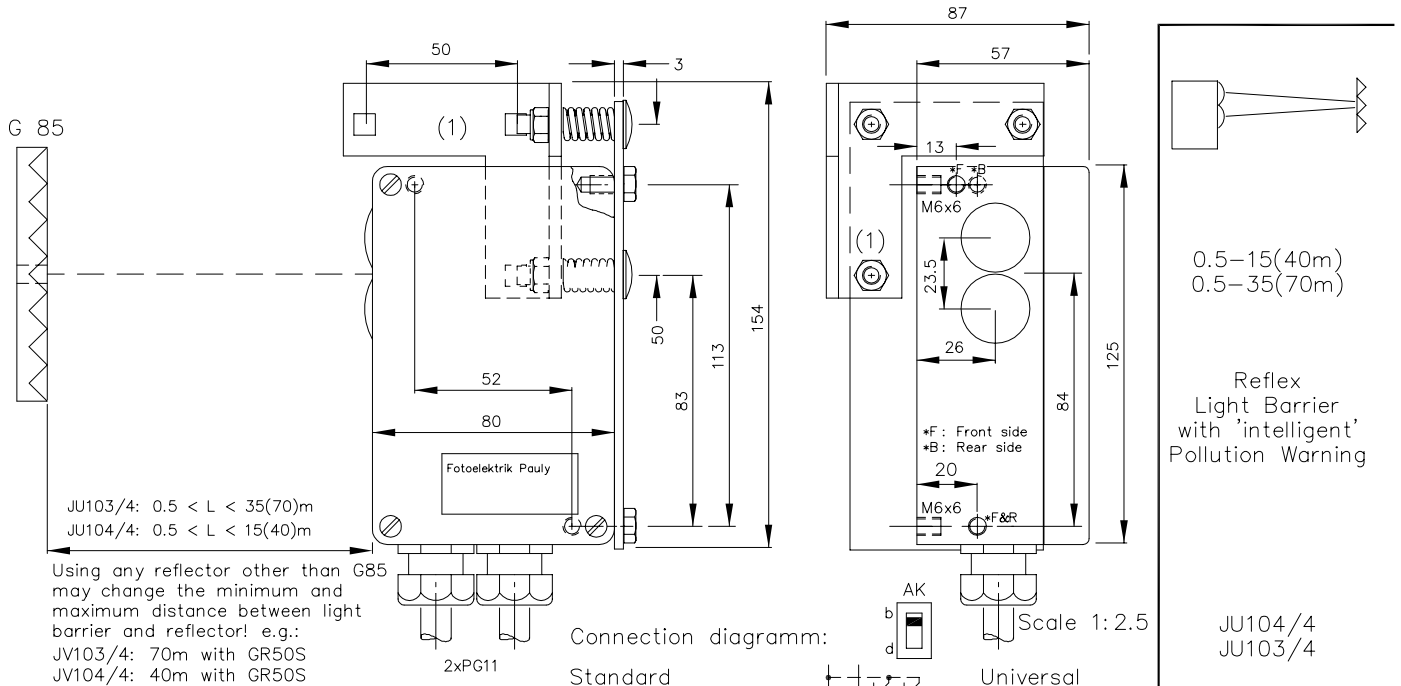


Infra-Red Reflex Light Barrier Type JU104/4 & JU103/4 with 'intelligent' Pollution Warning Output



Technical Characteristics:

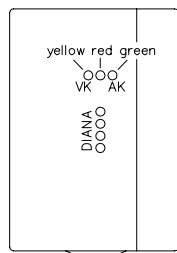
Housing	Al-Cast
Weight	approx. 700g
Protection mode	IP65
Connection	Terminal strip
Supply	230VAC/~3VA 24VDC/~80mA without load
Output	2 Relay 250VAC/10A, 2500VA, 1xCh
Signal mode	bright-/darkswitching selectable (only AK)
Transmitter light	GaAs 880nm, invisible
Steady light	JU103/4: >80kLx resist. JU104/4: >100kLx
Interference suppression	Force synchronization
Light beam diameter	approx. 130mm/10m
Access time	<12ms/Switch transition
Switching rate	Relay: 10/s; electron.: 40/s
Switch indicator	LED's green, red, yellow
Ambient temperatur	-25...+60°C

Accessories:

- Diaphragms
- Reflectors
- Adjustment flange JF26H (1)
- Heavy adjustment flange R26SH
- Elbow tube adjustment AD26SS1 or AD26SS2
- Cooling water flange KW26
- Anti dust tube TUB75 with adaptor
- Integrated protection system KJT.. or KRT26R*

* Including: cooling by water, adjustment, anti dust tube (optional: diaphragms, optical filter)

Scale 1:2.5



Hints: The switching equipment for the pollution warning (VK, yellow LED) is switched through when, subsequent to an interruption in light beam (red LED on) and the light path being free again (green LED on), dirt or clogging causes the signal level to be under five times the minimum level (red and green LEDs on) and the light beam is then interrupted again. At this point in time, the light barrier is still fully functional. As soon as the dirt has been removed (green LED on, red LED off), the dirt indicator (yellow LED) switches off.

EC 1132 1.TXT

1132 DE (18.02.05 mj)
E_1132_1 (13.04.05 mj)
(02.05.97 tb)
(13.01.03 gs)