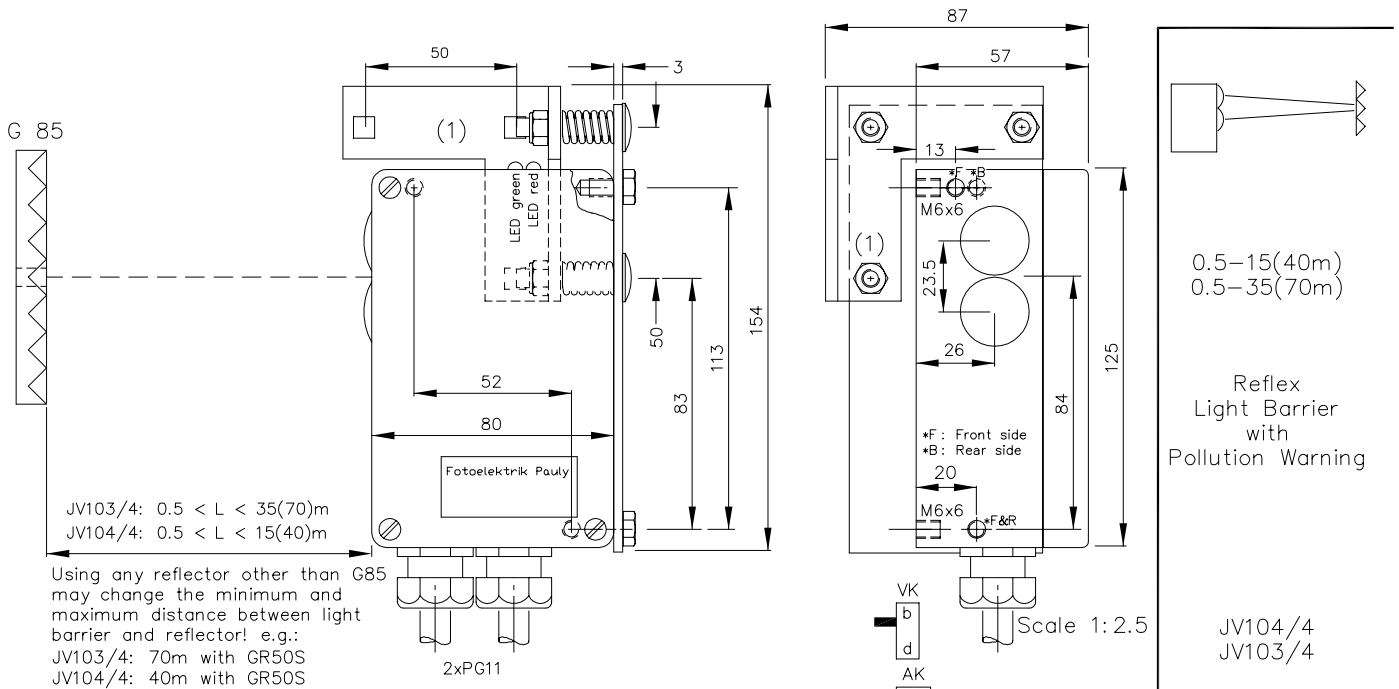


Infra-Red Reflex Light Barrier Type JV104/4 & JV103/4

with Pollution Warning Output



JV103/4: 0.5 < L < 35(70)m
JV104/4: 0.5 < L < 15(40)m

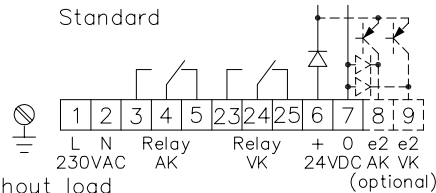
Using any reflector other than G85 may change the minimum and maximum distance between light barrier and reflector! e.g.:
JV103/4: 70m with GR50S
JV104/4: 40m with GR50S

Technical Characteristics:

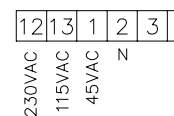
Housing	Al-Cast
Weight	approx. 700g
Protection mode	IP65
Connection	Terminal strip
Supply	230VAC/~3VA 24VDC/60mA without load
Output	2 Relay 250VAC/10A, 2500VA, 1xCh
Signal mode	bright-/darkswitching selectable
Transmitter light	GaAs 880nm, invisible
Steady light resist.	JV103/4: >80kLx JV104/4: >100kLx
Interference suppression	Force synchronization
Light beam diameter	approx. 130mm/10m
Access time	<12ms/Switch transition
Switching rate	Relay: 10/s; electron.: 40/s
Switch indicator	LED's green, red
Ambient temperatur	-25...+60°C

Connection diagramm:

Standard



Universal transformer (optional)



Special Design:

Connection	4+1 pin Plug stA5 6+1 pin Plug stA7 6+1 pin Plug stH7 5+1 wire No.-Cable K6 2x3 wire No.-Cable 2K3
Supply	24-80VUC 110-130V, 42-48V, 24VAC or 230/115/45VAC with universal transformer
Output	npn 60mA s.c.-prot., e2 npn 60mA s.c.-prot., e3 Optocoupler 60V/50mA, e1
Access time	"q": <2ms/Switch transition
Switching rate	"q": 300/s, Relay: 10/s
Level indicator	DIANA, i
Heat-protected transducer system, pl	
If using cooling water flange, then milled wall, y	

Hints:

The switching equipment for the pollution warning (VK, red LED) is switched through when dirt or clogging causes the signal level to be under five times the minimum level. *EC 11421.TXT*

Order no.:

1141
1142

1142 DE (13.01.03 gs)
E_1142 1 (18.02.05 m.j)
(09.08.96 tb) (13.04.05 m.j)
(30.01.98 tb)

Accessories:

- Diaphragms
- Reflectors
- Adjustment flange JF26H (1)
- Heavy adjustment flange R26SH
- Elbow tube adjustment AD26SS1 or AD26SS2
- Cooling water flange KW26
- Anti dust tube TUB75 with adaptor
- Integrated protection system KJT.. or KRT26R*

* Including: cooling by water, adjustment, anti dust tube (optional: diaphragms, optical filter)

The design and make of the devices and their electronics are intellectual property of the company "Fotoelektrik Pauly GmbH & Co. KG". Internal circuit diagrams can, for copyright reasons, not be given therefore. Subject to technical alterations. Errors excepted. The reprinting of this data sheet or the copying of extracts from it are allowed only with the approval of the "Fotoelektrik Pauly GmbH & Co. KG" and with an indication of the sources used. Infringements are punishable by law.