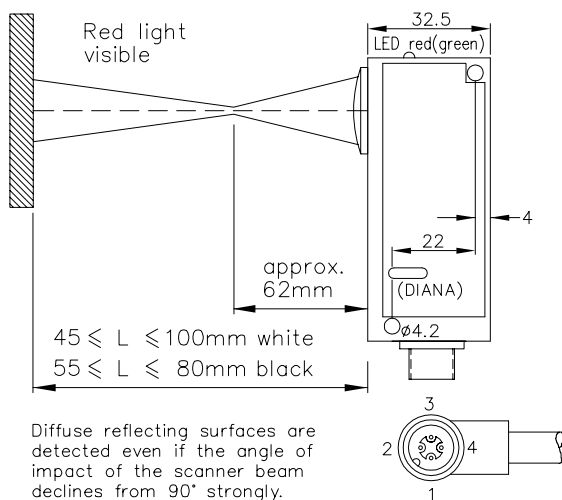
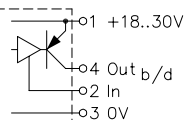


Local Range Scanner Type JP171 NT62

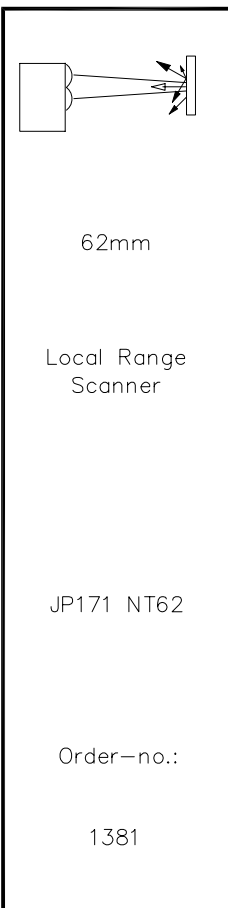
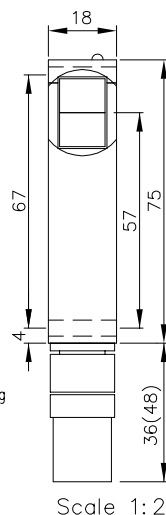


Diffuse reflecting surfaces are detected even if the angle of impact of the scanner beam declines from 90° strongly.
*Reflecting surfaces impair the scanning quality. *
E_1261 1.TXT

In=0V or disconnect : Out brightswitching
In=+24V : Out darkswitching



Connection diagram of version: 24VDC, e2, stLU4



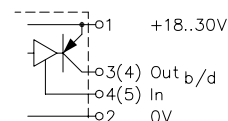
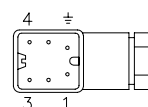
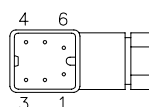
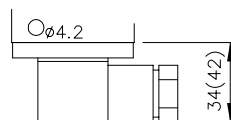
Technical characteristics of minimum type:

Housing	Al-Cast
Weight	approx. 100g
Protection mode	IP65
Connection	4 pin plug stLU4
Supply	24VDC/40mA without load
Output	pnp 60mA s.c.-prot.,e2
Signal mode	bright-/darkswitching, selectable
Transmitter light	LED 650nm
Steady light resistance	>80kLx
Interference suppress.	forced synchronization
Light beam diameter	approx. 80mm/5m
Access time	<12ms/switch transition
Switching rate	40/s
Switch indicator	LED
Ambient temperatur	-25...+60°C

Features:

Connection	6 pin Plug stHI61 5+1 pin Plug stHI62
Output	5 wire no.-Cable K5 (IP67) npn 60mA s.c.-prot., e3 Optocoupler 60V/50mA, e1 antivalent pnp, e4 or npn, e5
Access time	"q" <2ms/switch transition
Switching rate	"q" 300/s
Level indicator	DIANA, i (not with e4- or e5-Output)

Various Plugs stHI6..:



Connection diagram of version: 24VDC, e2, stHI6..

1381 DE
E_1381_1
(27.05.03 gs)
18.02.05 mj

Accessories (optional):

Elbow tube adjustment JR17