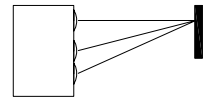
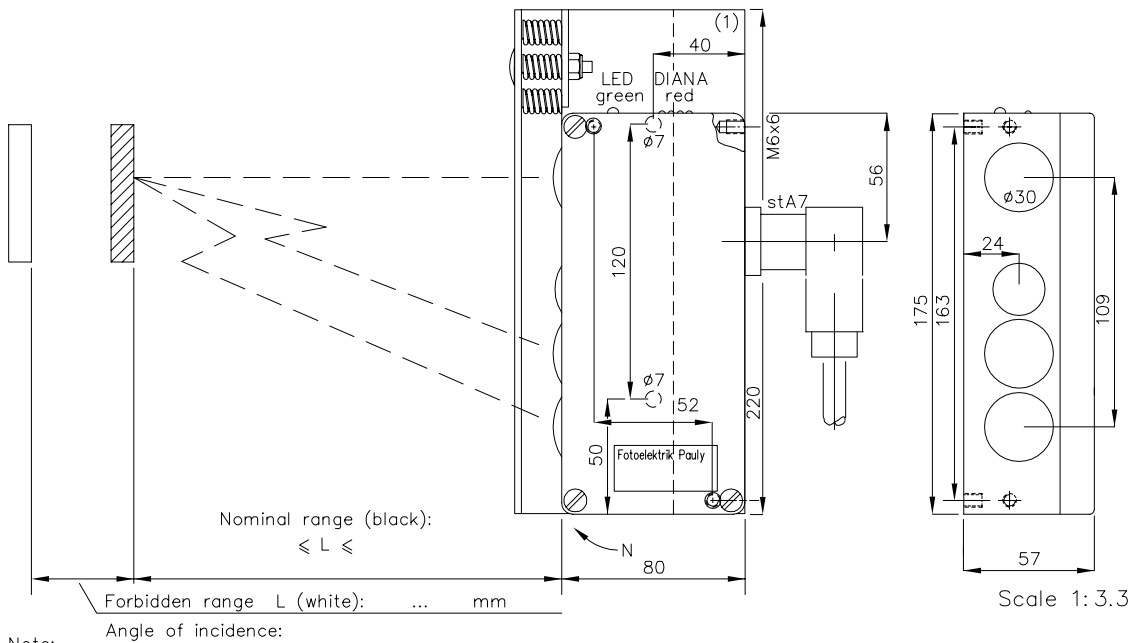


Reflex-Scanner Type JV103RFZ

Special Type PVRFZ13 / / /



100-1300mm

Reflex-Scanner
with Pollution
Warning

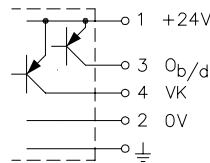
JV103RFZ...
PVRFZ13...././.

Order-no.:

1458

Note:

1. Diffuse reflecting surfaces are reliably detected even when the scanning beam's angle of incidence deviates sharply from 90°.
2. Reflecting surfaces can considerably impair the scanning quality.
3. However, reflective surfaces can still be recognised beyond the forbidden distance L ; slightly tilting the scanner helps.
4. Tilting should only be done in the direction of the "N" arrow.
5. In the case of cylindrical scanning objects the scanning beams should be directed onto the surface line as far as possible.



Connecting diagram
of standard version:
24VDC, e2, 6+1 pin Plug stA7

Technical Characteristics of the minimum version:

Housing	Al-Cast
Weight	approx. 800g
Protection mode	IP65
Connection	6+1 pin Plug stA7
Supply	24VDC/80mA without load
Output	npn 60mA s.c.-prot., e2
Signal mode	bright-/darkswitching, selectable
Transmitter light	GaAs 880nm, invisible
Steady light resist.	>80kLx
Interference suppress.	forced synchronization
Access time	<12ms/switch transition
Switching frequency	electron.: 40/s
Switch indicator	LED green (AK), red (VK)
Level indicator	DIANA,i (red)
Ambient temperatur	-25...+60°C

Options:

Connection	4+1 pin plug stA5 4+1 wire no.-cable K5
Output	npn 60mA s.c.-prot., e3 Optocoupler 60V/50mA, e1
Access time	"q": <2ms/switch transition
Switching freq.	"q": electron.: 300/s
Heat-protected optical system, pl	
If using cooling water flange, then milled wall, y	

Accessories:

- Heavy adjustment flange R27SH (1)
- Stauff-clamp adaptor AD27SS2
- Cooling water flange KW27

Hints:

The switching equipment for the pollution warning (VK, red LED) is switched through when dirt or clogging causes the signal level to be under four times the minimum level. *E_ 1142 1.TXT*

Description of Application: _____

1458 DE
E_1458 1
(06.06.03 gs)
18.02.05 ml