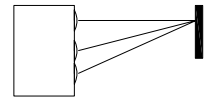
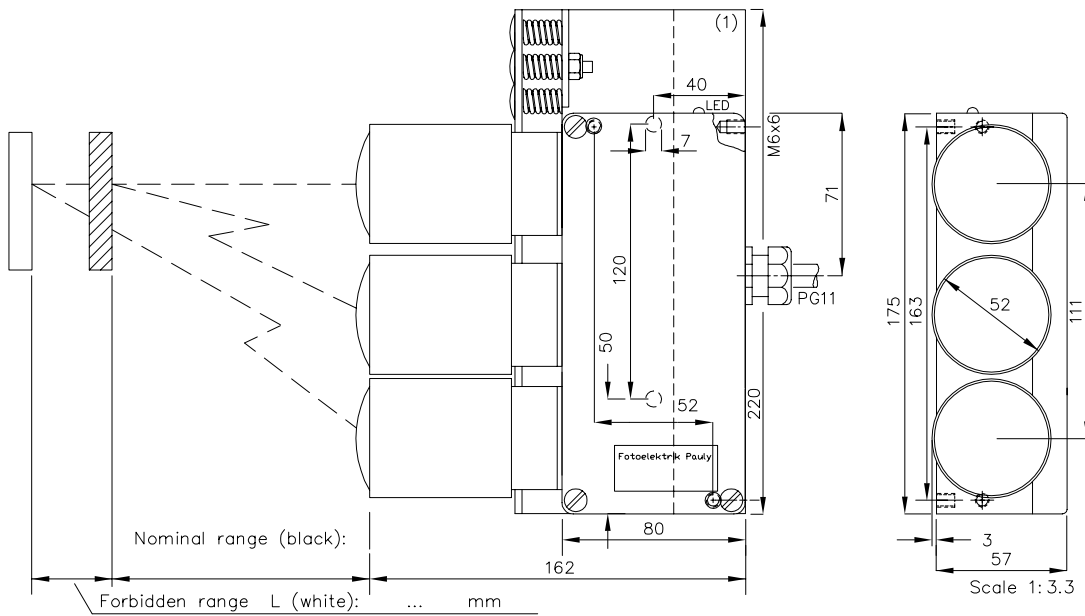


## Reflex-Scanner with active Background Response Suppression

Type PR1032RFZ / /



1200-2800mm

Reflex-Scanner with active Background Response Suppression

PR 1032 RFZ...

Order-no.:

1457

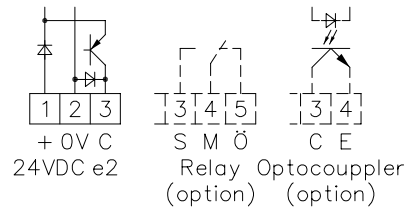
Note: Angle of incidence:

1. Diffuse reflecting surfaces are reliably detected even when the scanning beam's angle of incidence deviates sharply from 90°.
2. Reflecting surfaces can considerably impair the scanning quality.
3. However, reflective surfaces can still be recognised beyond the forbidden distance L; slightly tilting the scanner helps.
4. Tilting should only be done in the direction of the "N" arrow.
5. In the case of cylindrical scanning objects the scanning beams should be directed onto the surface line as far as possible.

### Technical Characteristics:

Housing	Al-Cast
Weight	approx. 1400g
Protection mode	IP65
Connection	Terminal strip/PG11
Supply	24VDC/60mA without load
Output	pnp 60mA s.c.-prot., e2
Signal mode	bright-/darkswitching, selectable
Transmitter light	GaAs 880nm, invisible
Steady light resistance	>80kLx
Interference suppression	forced synchronization
Access time	<12ms/switch transition
Switching rate	electron.: 40/s; Relay: 10/s
Switch indicator	LED green
Level indicator	4xLED red, DIANA
Ambient temperatur	-25...+60°C

### Connection Diagram:



### Options:

Connection	4+1 pin Plug stA5 6+1 pin Plug stA7 3+1 pole no.-cable K4
Output	Relay 240VAC/5A 120W/1200VA, 1xCh, R npn 60mA s.c.-prot., e3 Optocoupler 60V/50mA, e1
Access time	"q": <2ms/switch transition
Switching rate	"q": electron.: 300/s; Relay: 10/s
Heat-protected optical system, pl	
If using cooling water flange, then milled wall, y	
Time Delay	0...10 s, switching-on-off-delay, separately adjustable, z10

### Accessories:

- Heavy adjustment flange R27SH (1)
- Stauff-clamp adaptor AD27SS2
- Cooling water flange KW27

Description of Application: \_\_\_\_\_

\_\_\_\_\_

\_\_\_\_\_

1457 DE (12.06.03 gs)  
 E-1457 1 (18.02.05 mij)  
 (21.06.95 tb)  
 (09.01.98 tb)