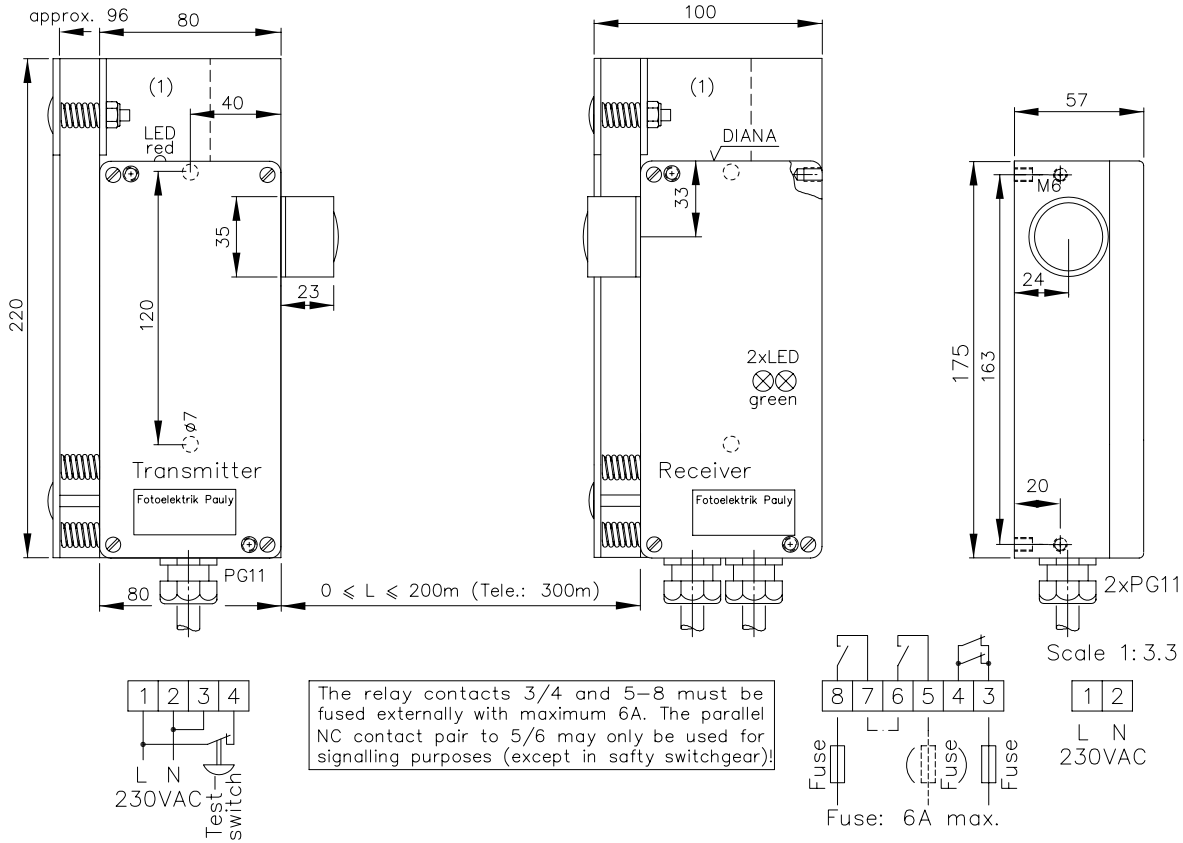
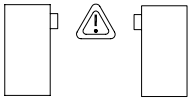


High Range self-checking Transmitter-Receiver Light Barrier Type PP2126/4





0 - 200(300m)

High Range self-checking Transmitter-Receiver Light Barrier,

PP2126/4

Order no.:

5722

Technical Characteristics:

Housing	Al-Cast
Weight	R: approx. 900g, T: approx. 700g
Protection mode	IP66
Connection	Terminal strip
Supply	Transmitter: 230VAC/3VA, ±10% Receiver: 230VAC/6VA, ±10%
Output	2 Relay, 250VAC/6A 1300VA, supervised and forceguided, 250VAC/6A
Test input	Optocoupler, to operating voltage
Signal mode	brightswitching
Access time	approx. 50ms, after beam interruption
Transmitter light	GaAs 880nm, invisible
Steady light resistance	>80kLx
Level indicator receiver	DIANA, i
Switch indicator receiver	2xLED green
Function indicator transm.	LED, red
Range	200m, with teleobj.: 300m
Power reserve	>500/20m/standardobjectiv
Active light-beam diameter	
Standardobjective:	ø30mm
Teleobjective:	ø50mm
Aperture angle	
Standardobjective:	T: <1,5° R: <2,6°
Teleobjective:	T: <0,7° R: <1,2°
Ambient temperatur	-25...+60°C

Special design:

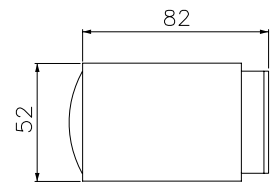
Connection	6+1 pole Plug stA7
Supply	24VDC, 24VAC, 42...48VAC, 115VAC
Heat-protected optical system, pl	
Teleobjective, t	PP2126/4 t (<300m)
Dynamic cascade input	

Accessories:

- Heavy adjustment flange R27SH(1)
- Elbow tube adjustment AD27SS1 or AD27SS2
- Cooling water flange KW27
- Anti dust tubes TUB46
- Deflecting mirror Sp100x100
- Diaphragms, Optical filters

L m	standard- objective	
	ø m	Tele- objective
10	<0,17	<0,1
30	<0,5	<0,25
100	<1,6	<0,8
300	(<5)	<2,5

Light spot diameter ø in relation to the distance L



Teleobjective, Scale 1:3.3

Attention:

Two working contacts must be used always! Make sure to fit a restart disabler at the machine end!

5722.DE (23.03.99 tb) 27.06.05 tb
E_5722_1 (07.01.04 gs)
(26.12.88 cm) (21.02.05 m)
(02.02.98 tb) (14.04.05 tb)